



# Hotel Genova

# INCLUSIVE HOTEL

## **Best Western and L'abilità Onlus**

working together to welcome guests with Autism Spectrum Disorders.

Best Western Italia and L'abilità Onlus have launched a project dedicated to guests with Autism Spectrum Disorders.

Inclusive Hotel is the name of the initiative and it aims to guarantee an **absolutely positive** stay in the hotel to people with **Autism Spectrum Disorders**, both children and adults together with their families and their carers.

This guide is dedicated to those that want to **start travelling again**.

The **services** and **strategies** listed in the guide are helpful in organising the trip and ensure a positive and welcoming experience in the hotel, guaranteeing a sense of **wellness** and **inclusion**.

To supplement the information provided **Augmentative and Alternative Communication Tables** on the hotel itself and on the destination can be found in the dedicated rooms.

**We wish you a pleasant stay.**

## General Information

The **Best Western Plus Hotel Genova** is located in Turin in Via Paolo Sacchi 14/b.

The hotel staff has been **trained** and is **aware** of the characteristics of people with **autism spectrum disorders**, of their special needs, and knows how to make the hotel **fully inclusive**.

Fabio Borio and Francesco Coniglio are **responsible** for the Inclusive Hotel project at the Best Western Plus Hotel Genova.

You can contact them by e-mail at [info@albergogenova.it](mailto:info@albergogenova.it) or by phone on 011-5629400.

**Do not hesitate to contact them:**

- for more information
- to book a room that is adequate to the needs of a person with ASD
- to communicate any special needs
- to communicate your time of arrival



## Check-In and Check-Out

The lobby of the **Best Western Plus Hotel Genova** has white sofas and armchairs and tables.

You access the hotel through a revolving door and the floor is carpeted. There is a bar, a piano, plants, and a TV that is always switched on, at clients' disposal.

The lobby measures around 70 square metres and at peak times **crowding** and **increased waiting times** could induce **sensory overload**.

During the day the most crowded times are:

- between 7am and 11am
- between 6pm and 9pm

It is therefore advisable to check-in and check-out outside these hours.

Pay and display parking in front of the hotel (16€ for 24h).

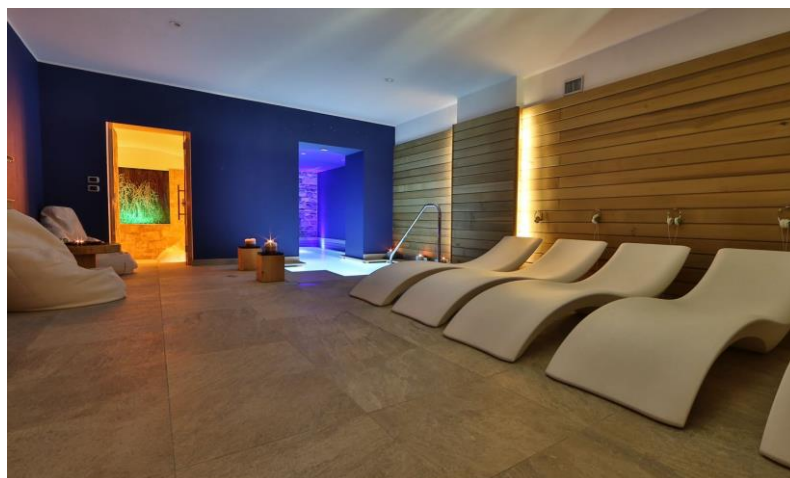
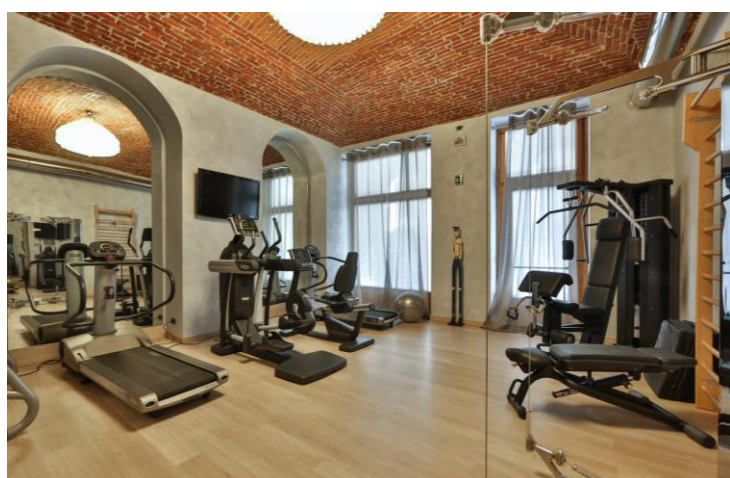


## Common areas

💡 No neon lighting.

🎵 Low volume background music.

spaces	location	characteristics
Bathroom	Level -1	<ul style="list-style-type: none"><li>• 4 bathrooms</li><li>• Paper towels</li><li>• Automatic lighting</li></ul>
Lobby	Ground Floor	<ul style="list-style-type: none"><li>• White armchairs and sofas, plants and piano</li><li>• TV – always on</li><li>• Bar</li></ul>
Spa	Level -1	<ul style="list-style-type: none"><li>• Open from 10am to 9pm (closed Monday)</li><li>• 18€ entrance fee</li><li>• Jacuzzi, Turkish bath, emotional shower, sauna, salt room, relax area</li></ul>
Gym	Level -1	<ul style="list-style-type: none"><li>• Always open</li><li>• Free entrance</li><li>• One barbell, two stationary bicycles, two treadmills, a multi-functional training equipment</li></ul>



## Room

The rooms dedicated to clients with ASD are equipped with features that can **help** in the case of **atypical sensory reactivity**:

- there are no neon lights but soft lighting
- the room is located far from noise sources
- cleaning products are fragrance free
- air fresheners are not used

The **bedding** is white with a runner, and a duvet is available to guests. For specific needs, guests are allowed to bring with them their own **personal items (blankets or cushions)** and the staff will make the bed. The windows can be closed from the inside and the room can be almost completely darkened by closing the curtains. Every room has a shower, TV, air conditioning, coffee and tea maker, bed and wardrobes.

For **room service** please dial number 9.

Please contact Reception for any **assistance** you may need.

You will also find **augmentative and alternative communication** material in your room concerning:

- Breakfast menu
- Rules of behaviour
- Communication tables
- An information sheet on Turin and its surroundings



## Hotel Information

The **Best Western Plus Hotel Genova** is located in the city centre, within walking distance from Via Roma and piazza Carlo Felice, situated in a strategic position, near **Porta Nuova train station** and **stone's throw from Turin centre**.

Ideal for those that are looking for good food and tradition in a magical ancient city. **Museo Egizio, Royal Palace of Turin, Basilica of Superga, Mole Antonelliana...**Turin and its surroundings offer magnificent sights and striking views that will make you fall in love with this elegant city.

Small-sized pets allowed.