



# Hotel Genio

# INCLUSIVE HOTEL

**Best Western** and **L'abilità Onlus** working together to welcome guests with Autism Spectrum Disorder (ASD).

Best Western Italia and L'abilità Onlus have launched a project dedicated to guests with Autism Spectrum Disorder.

Inclusive Hotel is the name of the initiative and it aims to guarantee an **absolutely positive** stay in the hotel to people with **Autism Spectrum Disorders**, both children and adults together with their families and their caregivers.

This guide is dedicated to those who want to **start travelling again**.

The **services** and **strategies** listed in the guide are helpful in organising the trip and ensure a positive and welcoming experience in the hotel, guaranteeing a sense of **wellness** and **inclusion**.

To supplement the information provided **Augmentative and Alternative Communication Tables** on the hotel itself and on the destination can be found in the dedicated rooms.

**We wish you a pleasant stay.**

## General Information

The **Best Western Hotel Genio** is located in **Turin** in corso Vittorio Emanuele II, 47.

The hotel staff has been **trained** and is **aware** of the characteristics of people with **autism spectrum disorders**, of their special needs, and knows how to make the hotel **fully inclusive**.

**Cecilia Garetto** is **responsible** for the Inclusive Hotel project at Hotel Genio.

You can contact her by e-mail at [info@hotelgenio.it](mailto:info@hotelgenio.it) or by phone on +39 0116505771.

**Do not hesitate to contact her:**

- for more information
- to book a room that is adequate to the needs of a person with ASD
- to communicate any special needs
- to communicate your time of arrival



## Check-In and Check-Out

Entering the **Hotel Genio** you will find on the right the reception and the staff for the check-in. Here you can ask for all the services and for any information. The desk is a long wooden bench with a marble top, with some plants on it.

In the center of the lobby there is a carpet set in a marble frame.

In front of this counter there is an archway that leads to the bar/relaxation area where there are some sofas and the bar counter. The sofas, usually used for waiting, are arranged to form 4 sitting areas; those furthest from the reception desk are also the quietest.

The lights that illuminate this space are neutral in color and LED.

The lobby is large and there may be moments of great turnout with consequent increase in waiting times and possible crowding with sensory overload.

During the day the **most crowded times** are:

- between 7.30 a.m. and 9.00 a.m.
- between 6.00 p.m. and 8.00 p.m.

It is therefore advisable to check-in and check-out outside these hours.

The hotel is always open (24/7).





## Common areas

☹ No neon lighting.

🎵 No volume background music.

Space	Location	Characteristic
Bathroom	Ground floor / breakfast room area	<ul style="list-style-type: none"> <li>• Women's bathroom with common area with 2 sinks and access to 1 WC.</li> <li>• Men's bathroom with common area with 2 sinks and access to two toilets.</li> <li>• Both areas with windows</li> </ul>
Breakfast room	Ground floor	<ul style="list-style-type: none"> <li>• 4 rooms separated by arches: a buffet room, the furthest from the entrance and 3 rooms with tables for 1, 2, 4 seats</li> </ul>
Hall	Ground floor	<ul style="list-style-type: none"> <li>• To the right is the reception desk;</li> <li>• On the left, an arch lead to the room with the sofas and the bar counter.</li> <li>• Bright with neutral lights</li> <li>• Carpet inside into a marble frame</li> </ul>
Bar Area / Sofas	Ground floor	<ul style="list-style-type: none"> <li>• TV off, can be switched on request</li> <li>• Leather sofas</li> <li>• Bar counter with mirror surface</li> </ul>
Relax Zone/ Internet Point	Ground floor	<ul style="list-style-type: none"> <li>• Internet point;</li> <li>• Two tables;</li> <li>• Snack machines</li> </ul>



## Room

The rooms dedicated to clients with ASD are equipped with features that can help in case of **atypical sensory reactivity**:

- there are no neon lights but soft lighting;
- the room is located far from noise sources;
- cleaning products are fragrance free;
- air fresheners are not used.

The **bedding** is white and a duvet is available to guests.

For specific needs, guests are allowed to bring with them their own **personal items** (**blankets** or **cushions**) and the staff will make the bed. The room has a Queen bed.

At the entrance there is a compartment for clothes.

There is a window with curtains to darken the room.

In the room there is also a desk, with a bottle of water and a kettle with tea bags, coffee, sugar, glasses and teaspoons on top.

There is a small minibar under the desk, empty but working, available for guests to put food and drinks in.

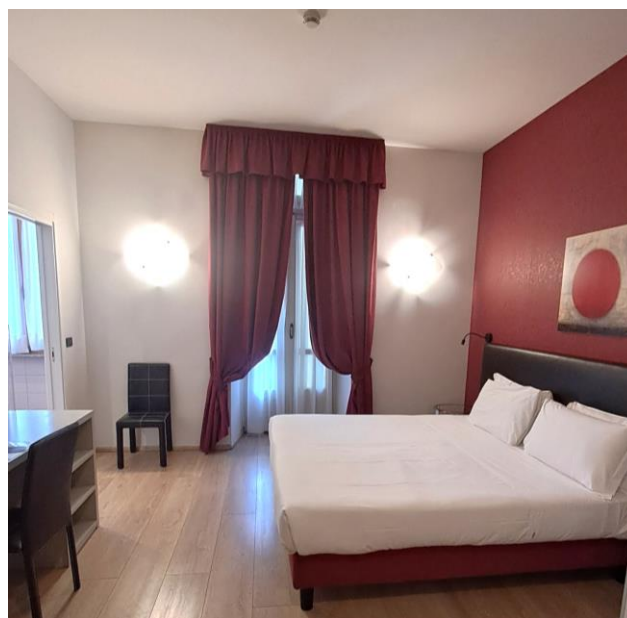
The en-suite bathroom is spacious and equipped with a window and shower.

For **room service** please dial 9

Please contact **Reception** for any **assistance** you may need.

You will also find **augmentative and alternative communication** material in your room concerning:

- Breakfast menu
- Rules of behaviour
- Communication tables
- An information sheet on Turin



## Breakfast

At **Best Western Hotel Genio** there is the breakfast room.

**A table will be reserved** for you in an area of the restaurant free from anything that could induce sensory processing disorder, away from busy passageways.

Breakfast time is from 7.00 a.m. to 10.00 a.m.

The times of **increased client influx**, that may lead to a higher risk of sensory overload are:

- 8.00 a.m. – 9.00 a.m. (during the weekdays)
- 9.00 a.m. – 10.00 a.m. (during weekend)

Guests can bring their **own food and drink** at the table.

If you communicate any **special needs** in advance, the hotel kitchen will do their best to satisfy your requests.

You will also find in your room, the breakfast menu with **augmentative and alternative communication symbols**.



## Hotel Information

The Hotel is located on **Corso Vittorio Emanuele II**, one of the main avenues of the city, with tall trees dividing the lanes.

Traffic is generally smooth but noisy.

There are rooms that overlook the side streets where the noise of the city is almost imperceptible.

The Hotel is located next to the **Porta Nuova train station** and the underground (50m with pedestrian crossing) and numerous bus stops such as:

- Bus **9** (Parco del Valentino – Allianz Stadium)
- Bus **33** (Adua – Papa Giovanni XXIII)
- Bus **64** (terminus in front of the hotel – Grugliasco)
- Bus **67** (Piazzale Albarello – Moncalieri)

Turin and its surroundings offer significant cultural sites and natural areas. To be mentioned the Museo Egizio, the Royal Palace, the Mole Antonelliana with the Museum of Cinema, il Park of Valentino.